

Glacier Park, Inc.



2010

Life is better in Glacier!

Where is



How far is Glacier Park from:

- 160km East of Kalispell / Whitefish
- 320km South of Calgary, AB Canada
- 1015km East of Seattle, WA
- 1130km North East of Portland, OR
- 2250km North East of Los Angeles, CA
- 3710km West of New York, NY

Amtrak Train– GPK
(East Glacier, MT)

Airport – FCA
(Glacier International, Kalispell, MT)

Bus- Greyhound Bus
(Kalispell, MT)

Glacier Park Employees

Our staff within Glacier Park is one of the most energetic and diverse groups of people in today's workforce!

During your stay in Glacier Park you will be working, living, and hanging out with Americans from all over the United States, mostly college students and recent graduates.



Our staff also consists of International Students on the Work & Travel Program.

We are happy to boast a staff rich in culture and experience from all over the world and every facet of life!!!

Canada
Slovakia
Czech Republic
Turkey

Taiwan
China
Singapore
France

Spain
Jordan
Egypt
Bulgaria



Make History in 2010!

Glacier Park, Inc. Properties

We operate 6 historic hotels, 5 restaurants, 5 retail gift shops, 4 camp stores, and a golf pro shop on the oldest greens in Montana, thus providing you a variety of exciting employment opportunities and an unparalleled experience in Glacier!

- Glacier Park Lodge
250 Employees
- Lake McDonald Lodge
180 Employees
- Many Glacier Hotel
200 Employees
- Swift Current Motor Inn
60 Employees
- Rising Sun Motor Inn
60 Employees
- Village Inn
15 Employees



Join Glacier Park, Inc in celebrating the
Centennial Summer!!!



1910 - 2010

Activities

No matter your pleasure Glacier has something to offer everyone!!!

**Hiking
Camping
Rafting
Fishing
Kayaking
Parties
Backpacking
Swimming
Summer Festivals
Horseback Riding
Wildlife Watching
Recreation Rooms**



Most all the activities above are free of charge, and those not, like rafting for example, are deeply discounted to GPI employees

The most important things in life are the places we have been and the people we meet along the way.

Weather



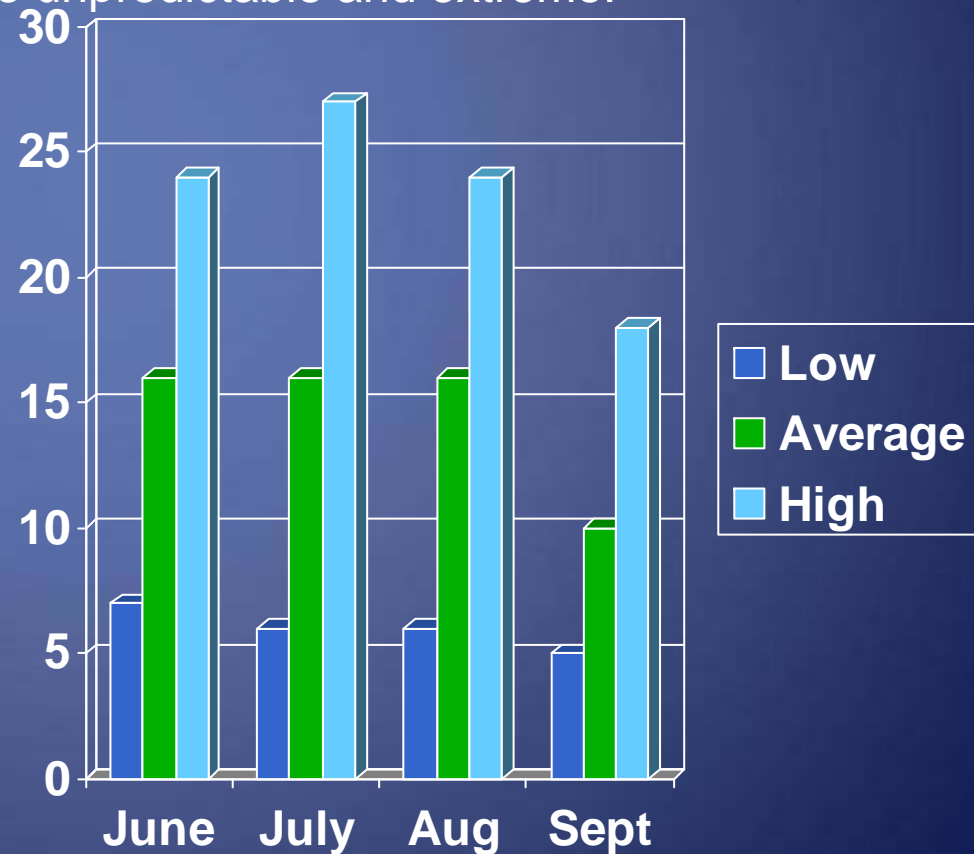
“Lets talk about the weather!”

The weather in Montana can be unpredictable and extreme.



During your summer stay it is not uncommon to experience cold mornings, hot days, and cold nights.

Most of the summer will be sunny and beautiful, but we suggest you dress in layers to accommodate the erratic changes.



Meals Lodging Transportation



We strive to provide you with healthy and diverse choices during your stay with us here in Glacier Park!

You will be served three meals daily, as well as have access to the employee dining room for snacks, fruit, sandwiches, juices, coffee, tea, and water.



Lodging Includes:

Shared Dormitory Room

Shared Washroom

Laundry Facilities

Wireless Internet

Security

linen



Transportation Includes:

Airport Pick Up

Shuttles to Kalispell & Whitefish

Daily Shuttles between Properties and Points of Interest

Historic Red Bus Tours

\$11usd per day for Meals, Lodging and Transportation

Positions

- **Retail** gift shop / camp store
- **Food and Beverage** dining room attendant
- **Housekeeping** room attendant / dorm attendant
- **Cooks** line and prep cooks / pantry cooks / dishwasher
- **Laundry** laundry associate

Second Jobs & Overtime

Depending on your location you may be able to seek out a second employer for additional income, however your primary obligation is to that of your position with Glacier Park, Inc.

You will be paid overtime for any time worked over 40 hours in one week. Overtime pay is Time and a half of your regular pay, and is paid with your regular wages every other week.





Getting Paid!

Direct Deposit: Allows employees to access and manage their funds online, with written checks, and/or an ATM card.

Direct deposit also facilitates with money transfers abroad.

Bi-Weekly Pay Checks: Employees can expect to receive compensation for their work every other Friday.

Automatic Deduction for Meals and Lodging: Pre tax deduction of \$77 week for Meals and Lodging.



Our staff will happily assist you in setting up you bank account in the United States.

International employees will receive their first pay check from the location accountant, so if there are any misunderstandings or confusion you will be able to ask questions at that time.

We do it ALL

Our commitment is all inclusive and begins when you decide to come to Glacier!

Correspondence with all new employees

Employee Pick Up from Airport, Train Station or Bus Depot

Social Security Administration Application Assistance

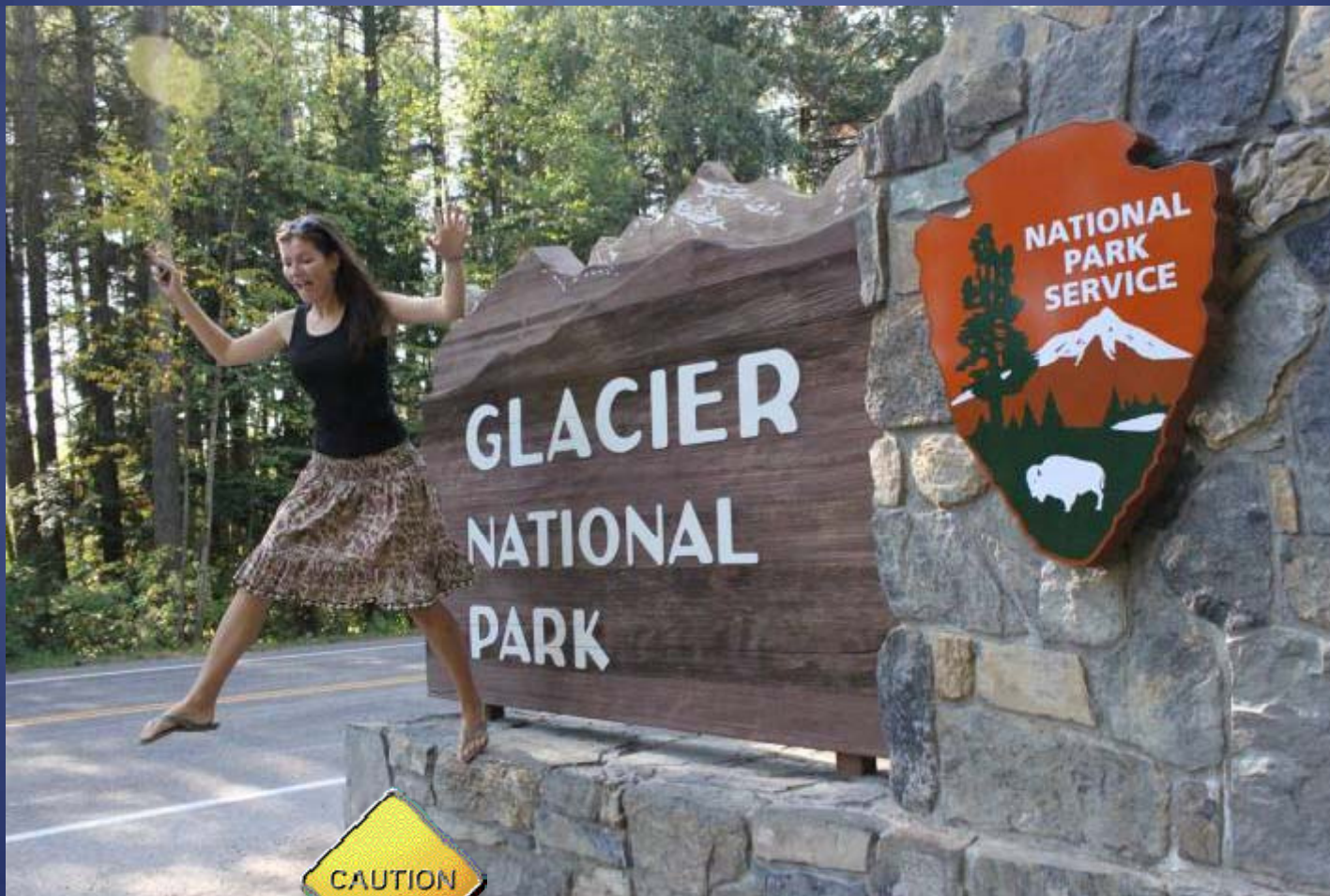
Getting Settled in GLACIER!!!

A special thank you to the agents and partners agents that have made this recruiting event possible.

Leon Stiffarm
Director of Operations
Glacier Park, MT

Mark Wilkerson
Recruiting Coordinator
Glacier Park, MT

A sneak peek at the People, Places and Things in Glacier....



Do Not Feed the Animals!

Friends Forever...



And then Some!







Living the Life

Laying Around,



**of
Glacier!**

Glacier Park Carnival

2
0
0
9





What
Time ???



Party Time!!!







And....



Still
Party
Time!





Faces
and



Smiles





HISTORY



CULTURE

NATURE





Beautiful Places Ahead.



**Get
Outside!**





**Hey!
Get to Work!**



Workin' It!



The Rules of Glacier

If your friend jumped off a cliff would you.....?

Well, Maybe!



**Wait,
This is
not a
Trail**



Have Fun!



Watch for Bears!!!

Give lots of Hugs!



Don't play with your Food!



Wake up on Time!





Hanging Around The lodges



It's All at
Glacier!



L
I
F
E



On Top!

Where will you be in **2010?**

Your Face Here



Or Here



Maybe Here





**See you Soon
in Glacier!**

**Follow us on
Facebook.com at
Glacier Park, Inc.**

By: Mark A Wilkerson