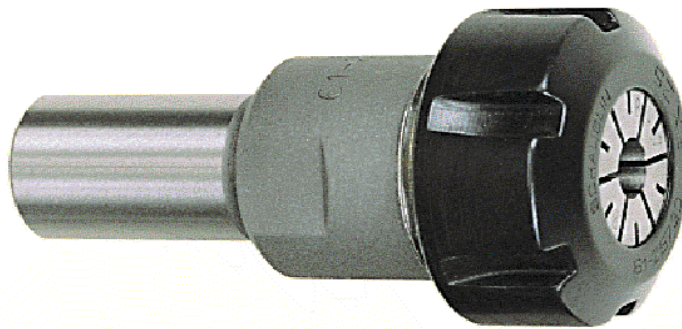


Porte-pinces E à queue cylindrique
Spannzangenhalter E mit zylindrischem Schaft
Collet chucks E with cylindrical shank



Les porte-pinces cylindriques sont conçus pour serrer les pinces de type EX, ESX et ET. Ils permettent l'application sur une grande variété de machines grâce à la gamme de porte-outils de différents diamètres et de différentes longueurs.

Ils sont prévus pour des broches tournantes et comme outil fixe.

Die Spannzangenhalter mit zylindrischem Schaft sind geeignet zum Spannen von Spannzangen des Typs EX, ESX und ET. Dank der breiten Produktpalette können sie auf einer Vielzahl von Maschinen eingesetzt werden.

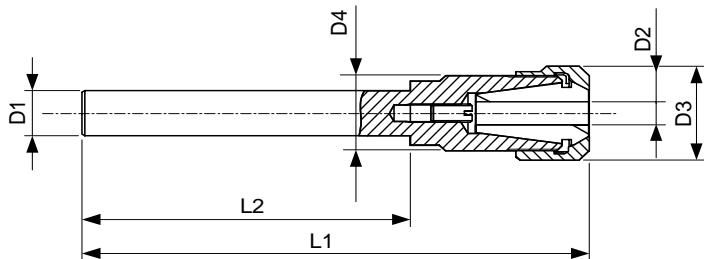
Sie kommen zum Einsatz als drehende und fixe Werkzeugaufnahmen.

Collet chucks with cylindrical shank are designed to hold collet types EX, ESX and ET. They can be applied on an extended variety of machines, with the help of a range of toolholders of various diameters and lengths.

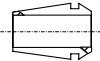
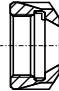
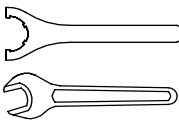

They are meant for revolving spindles and steady tools.

Porte-pinces E - Spannzangenhalter E - Collet chucks E

Queue cylindrique
Zylindrischer Schaft
Cylindrical shank



caractères gras : inclus dans la livraison
Fettschrift : im Lieferumfang inbegriffen
bold script : included in delivery

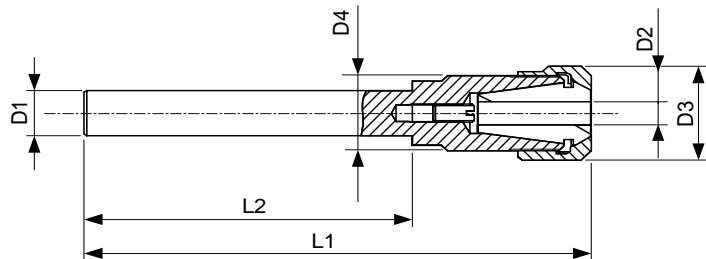
M	DIN 6499 A DIN 6499 B 	pince Spannzange collet PO.101
N	DIN 6499 D 	écrou Mutter nut PO.103
O		clé pour l'écrou Mutternschlüssel spanner for the nut PO.103
P		vis de réglage Anschlagschraube adjusting screw

D1	Art.	L1	L2	D2	D3	D4	M	N	O	P
6	61-12209	73.2	45	0.5-7	16.7	M13x0.75	75-12200 75-12300 ET1-12...	61-12710	-	-
7	61-12207	73.2	45	0.5-7	16.7	M13x0.75	75-12200 75-12300 ET1-12...	61-12710	-	-
8	61-09201 17)	41	23	0.5-5	15	M11x0.75	75-09200 75-09300	61-09730	-	-
	61-12206	84.2	56	0.5-7	16.7	M13x0.75	75-12200 75-12300 ET1-12...	61-12710	-	-
10	61-09200 17)	32	14.5	0.5-5	15	M11x0.75	75-09200 75-09300	61-09730	-	2000.04008
	61-16230	97.6	60	0.5-10	22	M19x1	75-16200 75-16300 ET1-16...	61-16772	61-16812	-
	61-16219 1)	107.6	60	0.5-10	25	M20x1	75-16200 75-16300 ET1-16...	61-16710	-	-
12	61-09220 17)	117	100	0.5-5	13.5	M10x0.75	75-09200 75-09300	61-09710	-	61-09901
	61-16231	117.6	80	0.5-10	22	M19x1	75-16200 75-16300 ET1-16...	61-16772	61-16812	-
	61-16224 1)	127.6	80	0.5-10	25	M20x1	75-16200 75-16300 ET1-16...	61-16710	-	-
12.7 (1/2")	61-09221 17) + 1)	117	100	0.5-5	13.5	M10x0.75	75-09200 75-09300	61-09710	-	61-09901

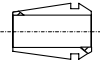
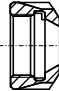
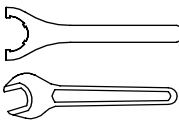

1) Jusqu'à épuisement du stock - Solange Vorrat - Whilst stocks last
 17) Arrosage par le centre - Für zentrale Kühlmittelzufuhr - cooling through centre

Porte-pinces E - Spannzangenhalter E - Collet chucks E

**Queue cylindrique
Zylindrischer Schaft
Cylindrical shank**



**caractères gras : inclus dans la livraison
Fettschrift : im Lieferumfang inbegriffen
bold script : included in delivery**

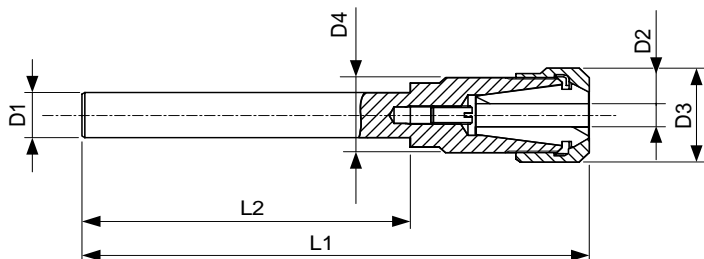
M	DIN 6499 A DIN 6499 B 	pince Spannzange collet PO.101
N	DIN 6499 D 	écrou Mutter nut PO.103
O		clé pour l'écrou Mutternschlüssel spanner for the nut PO.103
P		vis de réglage Anschlagschraube adjusting screw

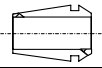

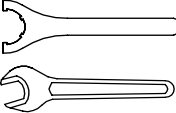

D1	Art.	L1	L2	D2	D3	D4	M	N	O	P
14	61-12200 17)	47	25	0.5-7	19	M14x0.75	75-12200 75-12300 ET1-12...	61-12730	-	87-90016
	61-12204 17)	83.2	60	0.5-7	16.7	M13x0.75	75-12200 75-12300 ET1-12...	61-12710	-	62-20910
	61-16200 17)	62	26	0.5-10	32	M22x1.5	75-16200 75-16300 ET1-16...	61-16730	61-16800	87-90015
16	61-12205	120.2	100	0.5-7	19	M14x0.75	75-12200 75-12300 ET1-12...	61-12730	-	61-12907
	61-12223 17)	174.2	151	0.5-7	16.7	M13x0.75	75-12200 75-12300 ET1-12...	61-12710	-	87-90007
	61-16206 17)	62	28	0.5-10	32	M22x1.5	75-16200 75-16300 ET1-16...	61-16730	61-16800	87-90015
	61-16218 17)	95.6	60	0.5-10	32	M22x1.5	75-16200 75-16300 ET1-16...	61-16730	61-16800	87-90015
	61-20209	148.5	100	0.5-13	30.5	M24X1	75-20200 75-20300 ET1-20...	61-20710	-	87-90026
20	61-12201	109.2	89	0.5-7	19	M14x0.75	75-12200 75-12300 ET1-12...	61-12730	-	87-90007
	61-16201 17)	57	36	0.5-10	32	M22x1.5	75-16200 75-16300 ET1-16...	61-16730	61-16800	87-90015
	61-16225 17)	80.6	50	0.5-10	32	M22x1.5	75-16200 75-16300 ET1-16...	61-16730	61-16800	87-90015

17) Arrosage par le centre - Für zentrale Kühlmittelzufuhr - cooling through centre

Porte-pinces E - Spannzangenhalter E - Collet chucks E

**Queue cylindrique
Zylindrischer Schaft
Cylindrical shank**



M	DIN 6499 A DIN 6499 B 	pince Spannzange collet PO.101
N	DIN 6499 D 	écrou Mutter nut PO.103
O		clé pour l'écrou Mutternschlüssel spanner for the nut PO.103
P		vis de réglage Anschlagschraube adjusting screw

**caractères gras : inclus dans la livraison
Fettschrift : im Lieferumfang inbegriffen
bold script : included in delivery**

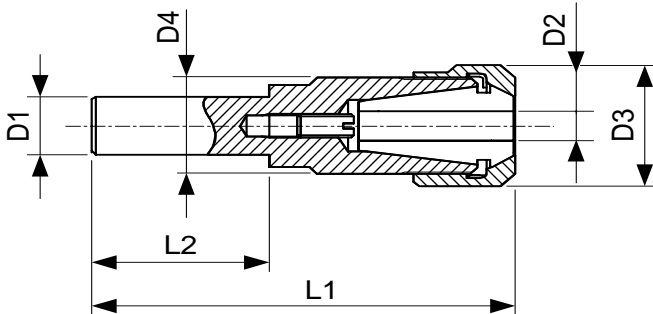
D1	Art.	L1	L2	D2	D3	D4	M	N	O	P
20	61-16212 1)	124.6	100	0.5-10	25	M20x1	75-16200 75-16300 ET1-16...	61-16710	-	87-90026
	61-16232	124.6	100	0.5-10	22	M19x1	75-16200 75-16300 ET1-16...	61-16772	61-16812	87-90026
	61-16223 17)	180.6	158	0.5-10	25	M20x1	75-16200 75-16300 ET1-16...	61-16710	-	61-16903
	61-20200 17)	71	35	0.5-13	35	M25x1.5	75-20200 75-20300 ET1-20...	61-20730	61-20800	61-20904
	61-25200 17)	81	34	0.5-16	42	M32x1.5	75-25200 75-25300 ET1-25...	61-25730	61-25800	61-25902
	61-25214 17)	97	50	0.5-16	42	M32x1.5	75-25200 75-25300 ET1-25...	61-25730	61-25800	61-25902
	61-32200 17)	87	34	2-20	50	M40x1.5	75-32200 75-32300 ET1-32...	61-32730	61-32800	61-20904
25	61-20221 17)	182	155	0.5-13	30.5	M24x1	75-20200 75-20300 ET1-20...	61-20710	-	87-90014
	61-25201 17)	84	48	0.5-16	42	M32x1.5	75-25200 75-25300 ET1-25...	61-25730	61-25800	61-32908
	61-32201 17)	99	48	2-20	50	M40x1.5	75-32200 75-32300 ET1-32...	61-32730	61-32800	61-32908
25.4 (1")	61-25203 17)	84	48	0.5-16	42	M32x1.5	75-25200 75-25300 ET1-25...	61-25730	61-25800	61-32908
	61-32202 17)	99	48	2-20	50	M40x1.5	75-32200 75-32300 ET1-32...	61-32730	61-32800	61-32908

1) Jusqu'à épuisement du stock - Solange Vorrat - Whilst stocks last

17) Arrosage par le centre - Für zentrale Kühlmittelzufuhr - cooling through centre

Porte-pinces E - Spannzangenhalter E - Collet chucks E

Queue cylindrique avec méplat
Zylindrischer Schaft mit
Spannfläche
Cylindrical shank with flat



caractères gras : inclus dans la livraison
Fettschrift : im Lieferumfang inbegriffen
bold script : included in delivery

M	DIN 6499 A DIN 6499 B 	pince Spannzange collet PO.101
N	DIN 6499 D 	écrou Mutter nut PO.103
O		clé pour l'écrou Mutternschlüssel spanner for the nut PO.103
P		vis de réglage Anschlagschraube adjusting screw

D1	Art.	L1	L2	D2	D3	D4	M	N	O	P
14	61-12208	47	25	0.5-7	19	M14x0.75	75-12200 75-12300 ET1-12...	61-12730	-	-
20	61-16233	180.6	158	0.5-10	22	M19x1	75-16200 75-16300 ET1-16...	61-16772	61-16812	61-16903
25	61-20211	182	155	0.5-13	30.5	M24x1	75-20200 75-20300 ET1-20...	61-20710	-	61-16914
	61-25216	182	145	0.5-16	35	M30x1	75-25200 75-25300 ET1-25...	61-25772	61-25812	61-16914